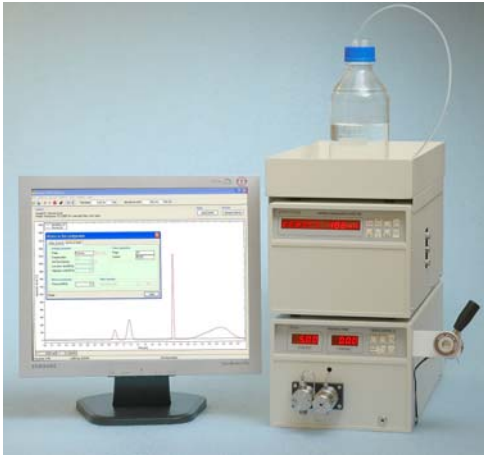


# 液相層析儀 High Performance Liquid Chromatography

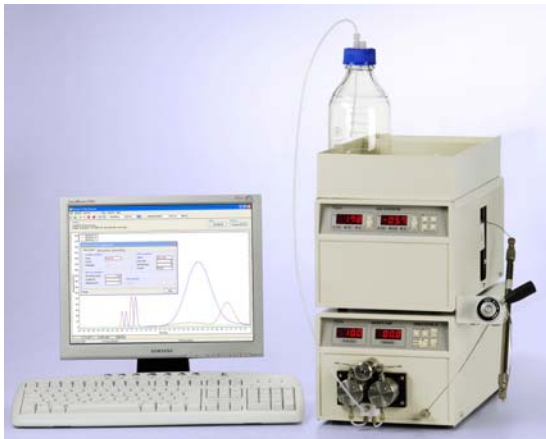
## 經濟型液相層析儀 Isocratic analytical HPLC system



### 系統設備包含：

- 高壓輸送幫浦－ALPHA 10 Isocratic Pump
- 紫外/可視光檢測器－OPAL UV-VIS Detector
- 樣品注入閥－Type D Injection
- 液相層析管－HPLC Analytical Column
- 層析軟體及電腦組－Peak-ABC(One Channel)

## 製備級液相層析儀 Preparative HPLC system



### 系統設備包含：

- 製備級輸送幫浦－ALPHA 100 Isocratic Pump
- 紫外光檢測器－TOPAZ Dual UV Detector
- 樣品注入閥－Type B Injection
- 液相層析管－HPLC Preparative Column
- 層析軟體及電腦組－Peak-ABC(Two Channels)
- 分液收集器－CHF100SA Fraction Collector (選配)

## 凝膠穿透層析儀 Gel Permeation Chromatography



### 系統設備包含：

- 高壓輸送幫浦－ALPHA 10 Isocratic Pump
- 折射率檢測器－RUBY 10 RI Detector
- 樣品注入閥－Type D Injection
- 液相層析管－HPLC GPC Column
- 層析軟體及電腦組－Peak-ABC GPC
- 管柱加熱烘箱－CH-600 Column Oven(選配)

# 液相層析儀 High Performance Liquid Chromatography

## 低壓梯度液相層析儀 Low Pressure Gradient HPLC system



### 系統設備包含：

- 梯度輸送幫浦－BETA 10 Gradient Pump
- 紫外/可視光檢測器－SAPPHIRE UV-VIS Detector
- 線上溶媒除氣裝置－DG 3014 Degasser
- 樣品注入閥－Type D Injection
- 液相層析管－HPLC Analytical Column
- 層析軟體及電腦組－Peak-ABC(Two Channels)
- 自動注射器－HT-300L Autosampler(升級選配)

## 高壓梯度液相層析儀 High Pressure Gradient HPLC system



### 系統設備包含：

- 高壓輸送幫浦(兩台)－ChromTech Isocratic Pump\*2
- 光二極體陣列式檢測器－DAD Diode Array Detector
- 高壓混合器－High-pressure Mixer
- 樣品注入閥－Rheodyne 7725i Sample Injector
- 液相層析管－HPLC Analytical Column
- 層析軟體及電腦組－DAD Chromatography Workstation
- 自動注射器－HT-300L Autosampler(升級選配)

## 離子層析儀 Ion Chromatograph System



### 系統設備包含：

- 非金屬輸送幫浦－S1121 Non-metal Analytical Pump
- 電導度檢測器－S3115 Conductivity Detector
- 背景消除裝置－S4260A/B IC Suppression Module
- 非金屬自動注射器－S5200 Autosampler(non-metal)
- 離子層析管－IC Column
- 層析軟體及電腦組－Data and Control System